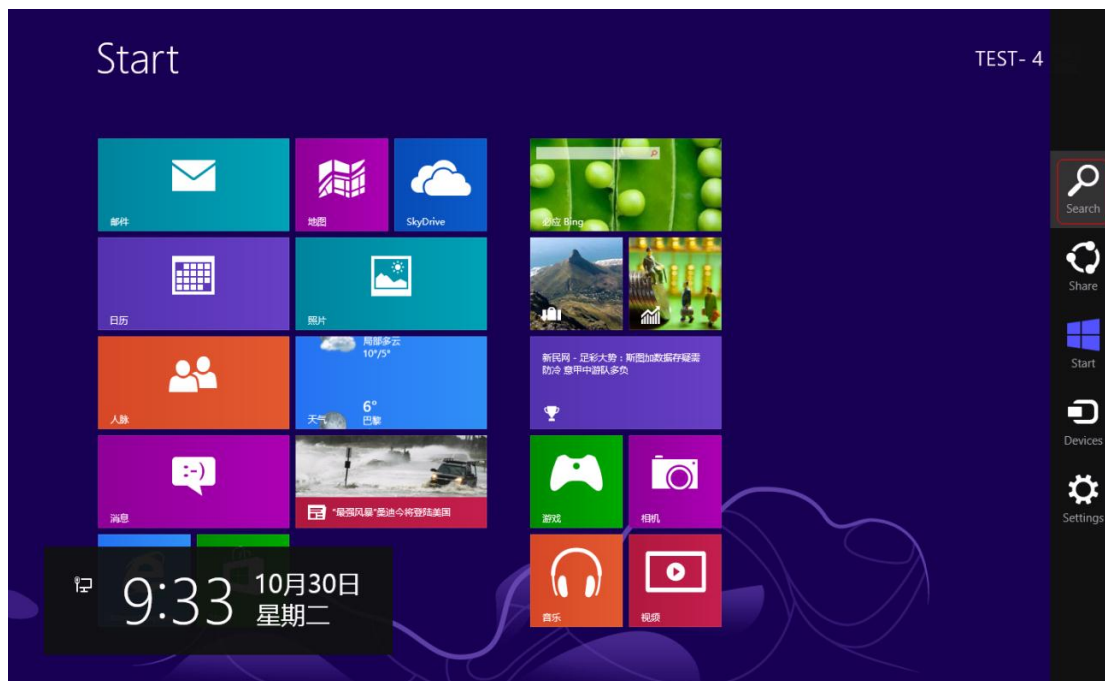


How to Manually Install Adapters on Windows 8

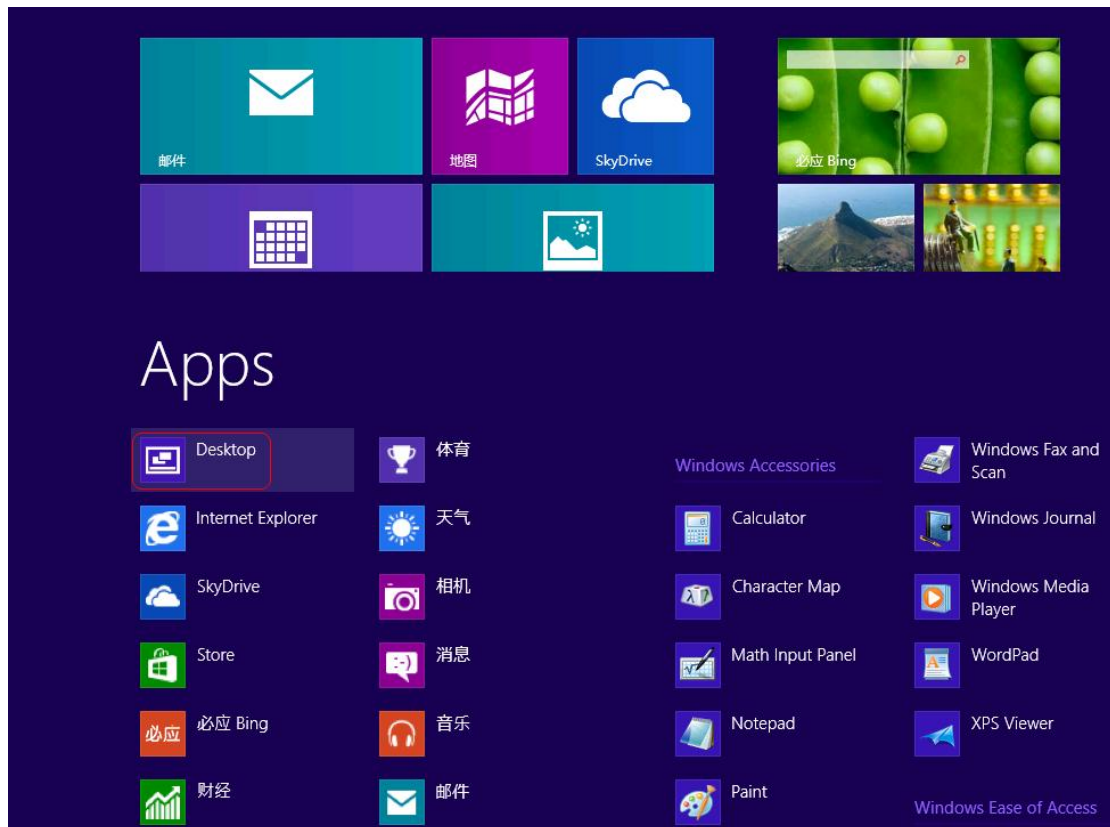
Suitable for: Adapters & 56K Modem, 300Mbps Wireless N Adapters, 150Mbps Wireless N Adapters, 54Mbps Wireless G Adapters

Before the installation, please download the latest Windows 8 driver from [TP-LINK official website](#), and extract the zip file to a folder.

First, please go to the right corner of computer screen, you will see the menu, then click **Search**.

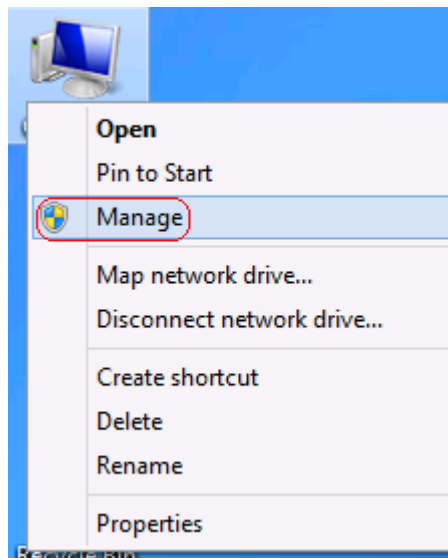


Click **Desktop**.

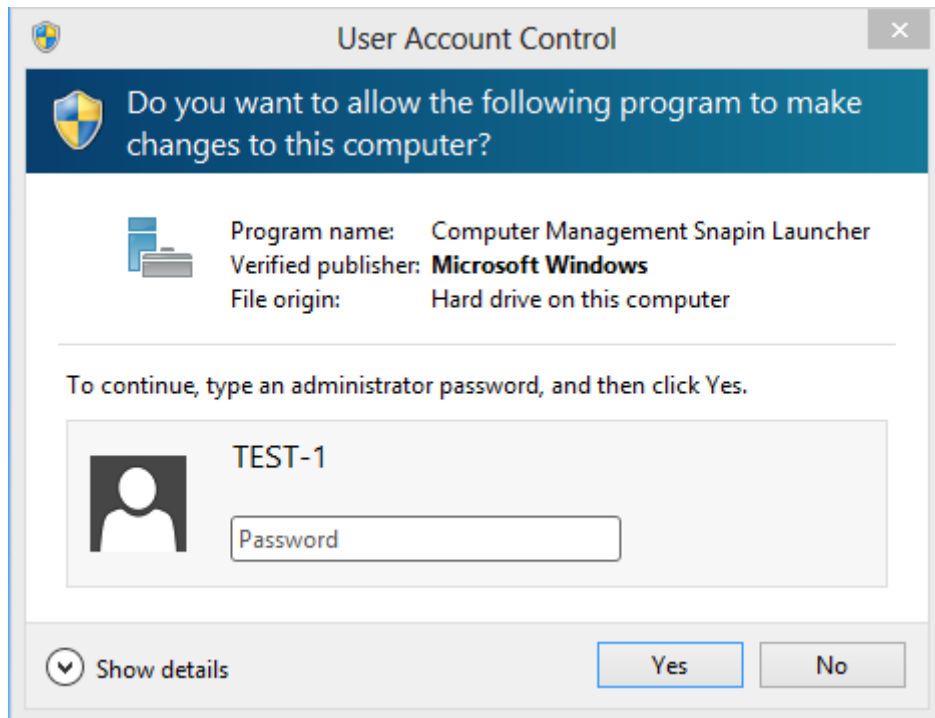


Then please follow the steps below:

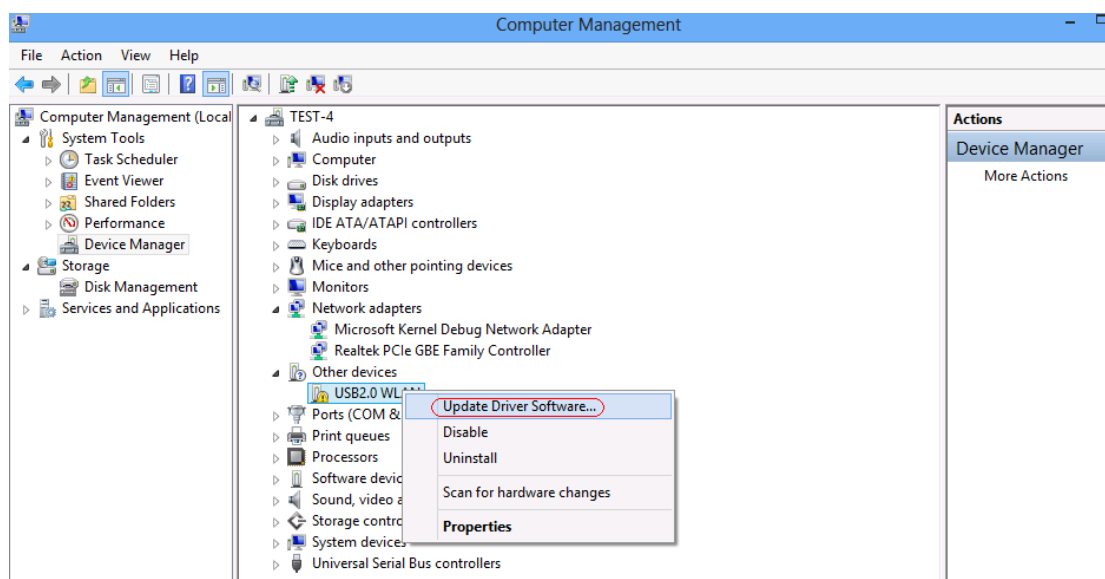
1. Insert the adapter onto your computer.
2. Download the updated software and extract it.
3. Right click **Computer**, and then click **Manage**.



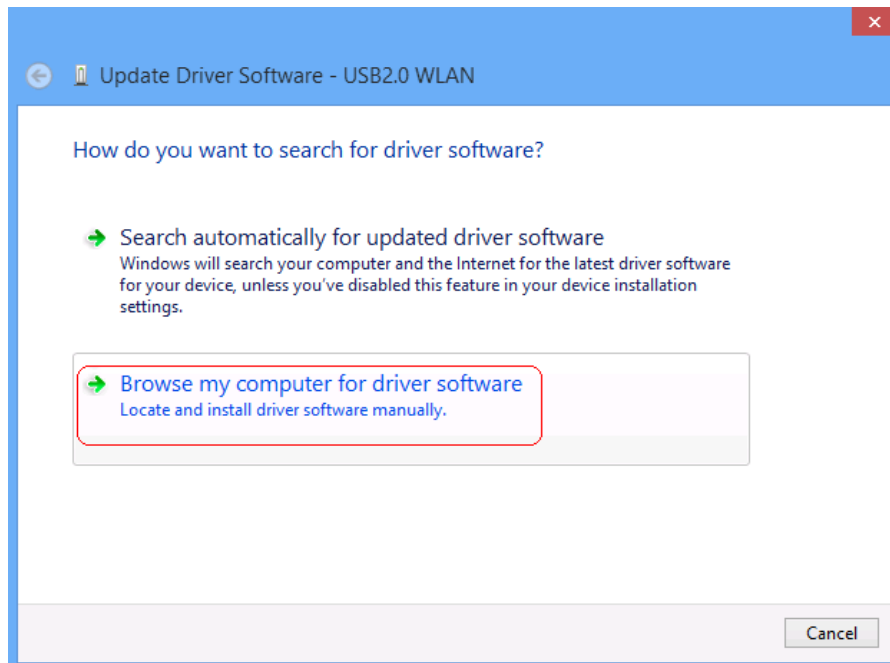
Then you will be prompted to type an administrator password, and then click Yes.



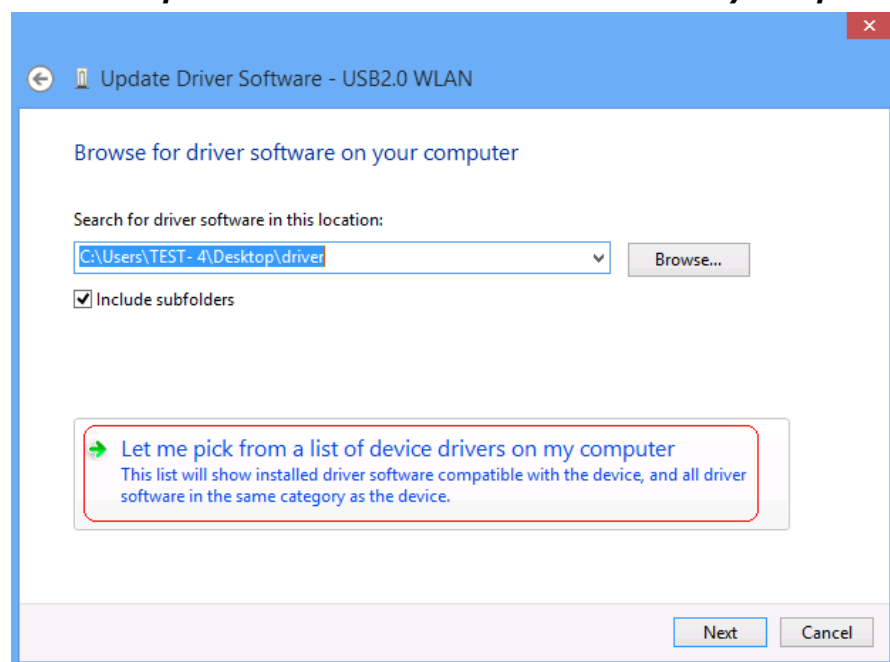
4. Open **Device Manager**. Right click the adapter and then click **Update Driver Software...**



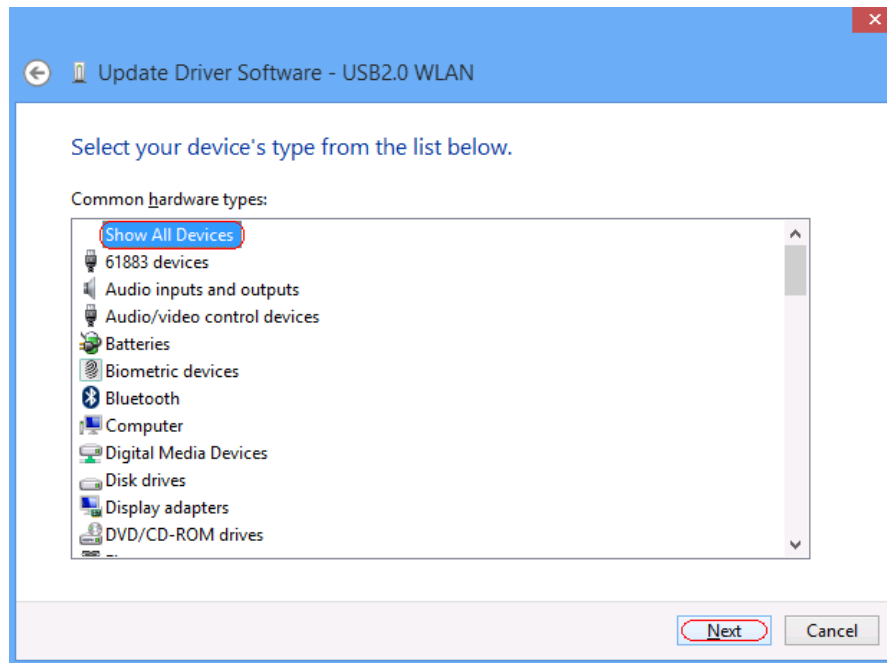
5. Click **Browse my computer for driver software.**



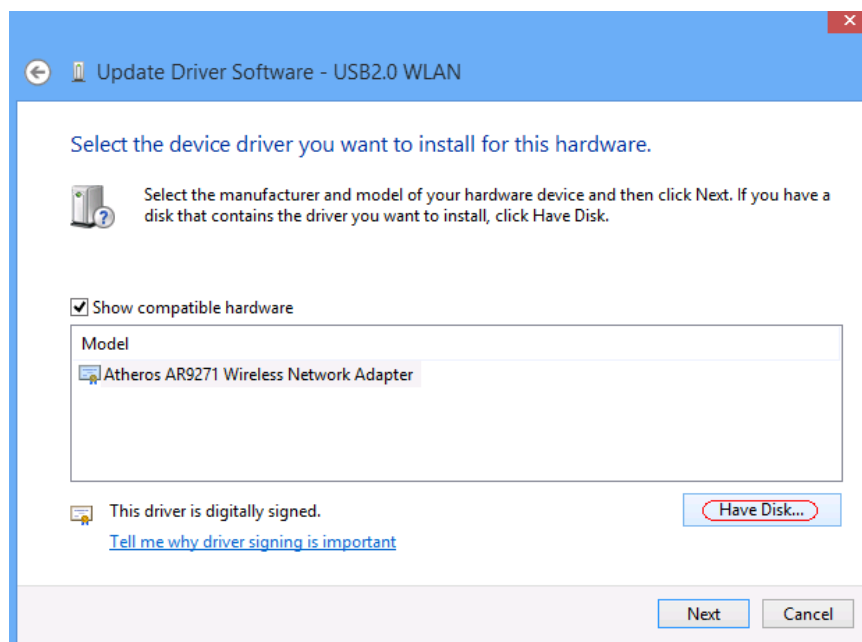
6. Click **Let me pick from a list of device drivers on my computer.**



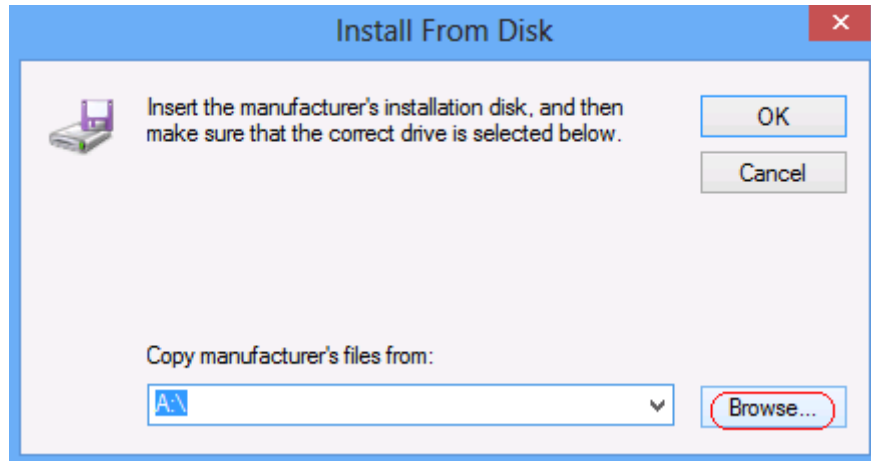
7. Highlight Show All Devices and click **Next.**



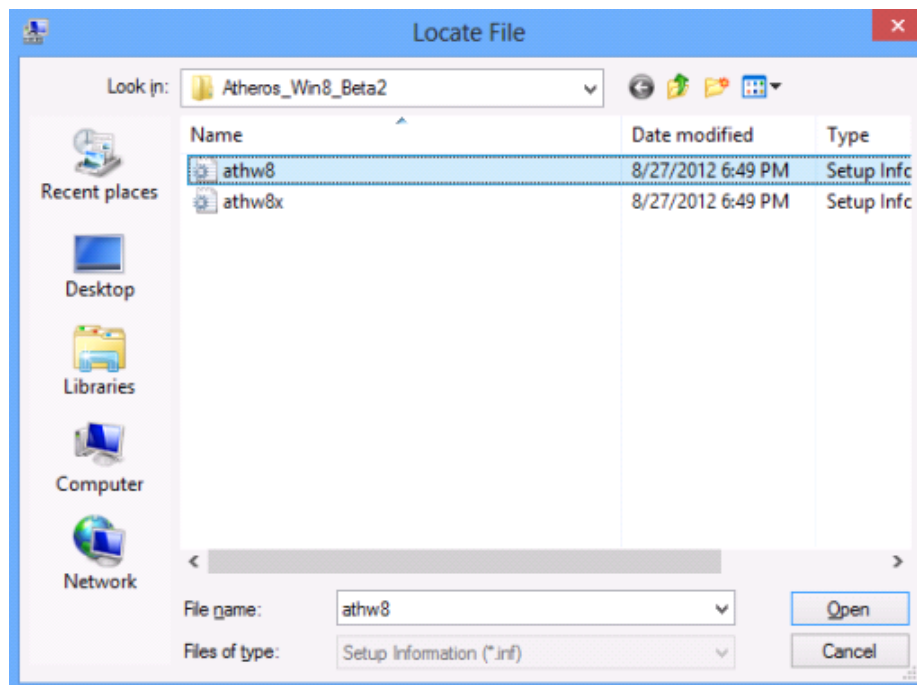
8. Click **Have Disk**.



9. Click **Browse**.

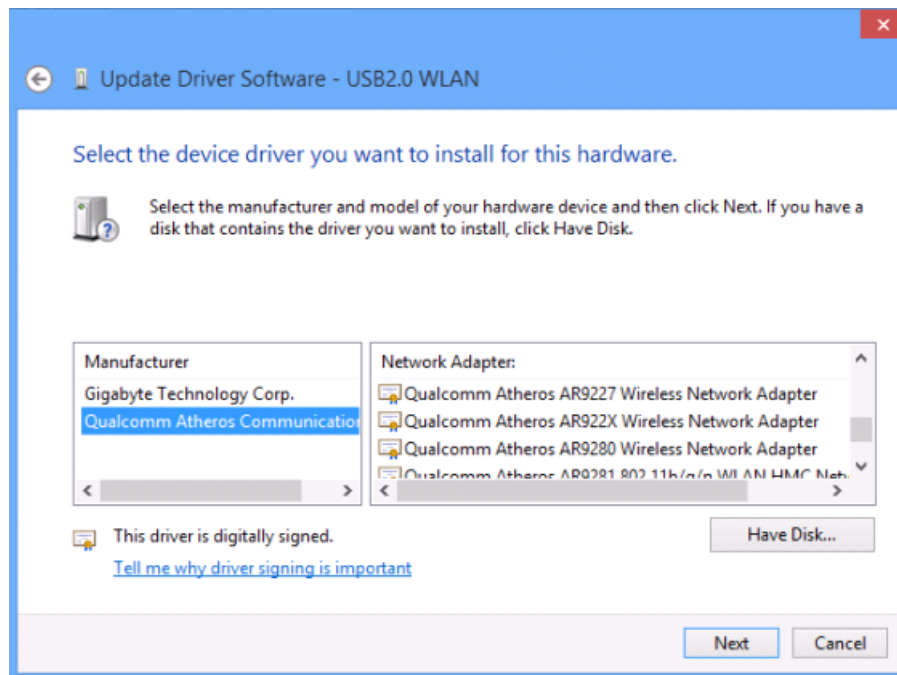


10. Select the inf file in the Windows 8 driver folder, and then click **Open**.

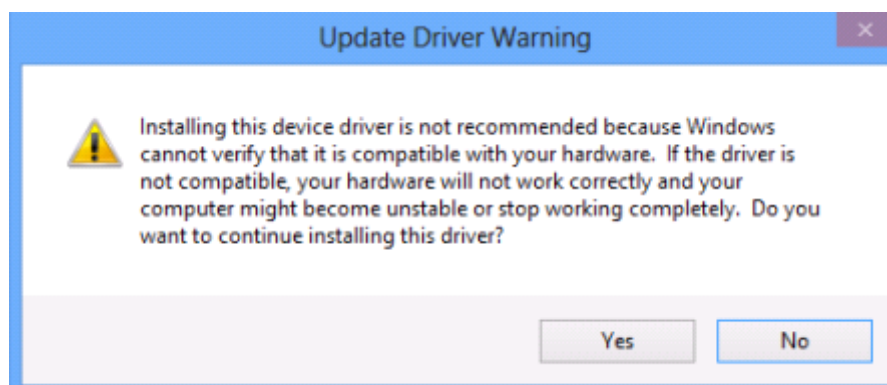


NOTE: athw8 is for 32-bit operating system, athw8x is for 64-bit operating system.

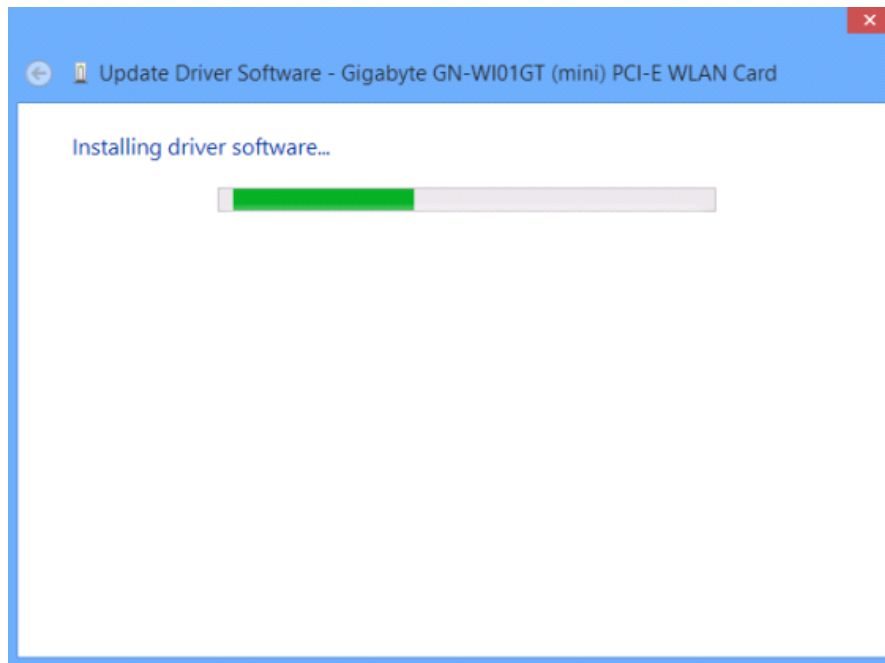
11. Select the device driver you want to install for this hardware and click **Next**.



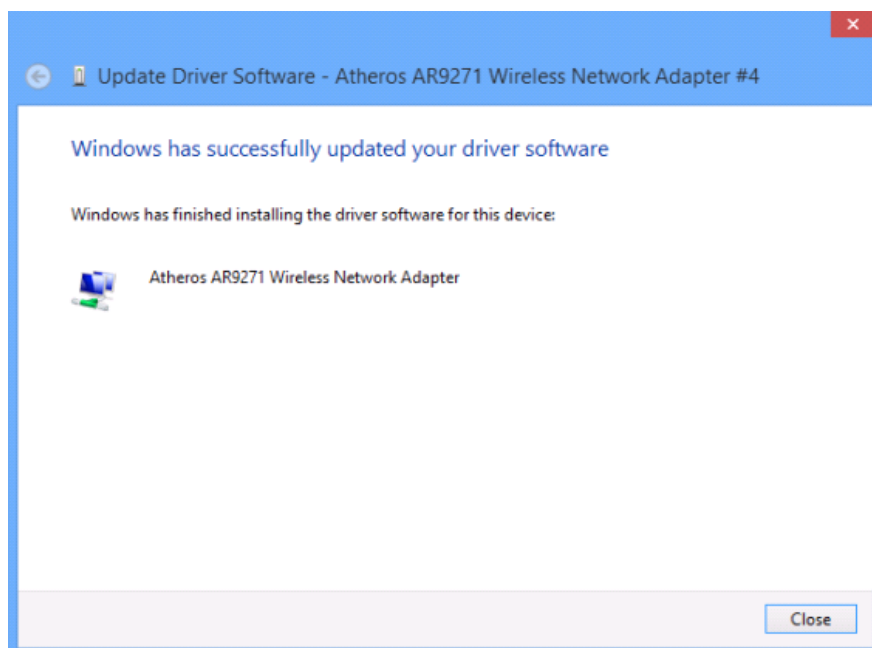
12. Click **Yes**.



13. Wait a moment.



14. Click **Close**.



If there are any further problems, please visit our [FAQ](#) page or contact [TP-LINK support](#).